



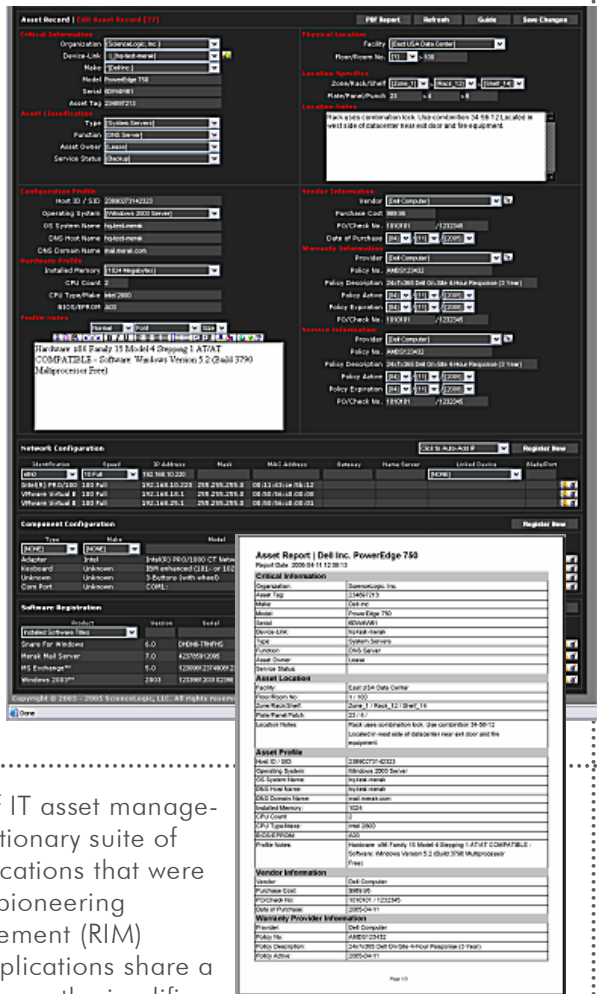
ASSET MANAGEMENT

Overview

Asset management has become a critical IT discipline to control costs, manage inventory, and improve IT asset utilization across the enterprise. Failure to properly reconcile and track software licensing, asset utilization, and vendor contracts cost time, expense, and possibly the risk of non-compliance fees. The objective is to manage the asset lifecycle from request through to decommission, and without efficient and flexible reporting, process control enforcement, and a centralized tracking system, management can neither determine the true cost-of-asset-ownership nor the proper usage. Previously, IT asset management was a discipline reserved for operations, but in today's business marketplace IT objectives exist to support business objectives, thus making accurate budgeting decisions and legislation compliance (Sarbanes-Oxley Act) critical.

The Solution

EM7 takes the complexity out of IT asset management by providing a truly revolutionary suite of embedded and integrated applications that were designed within ScienceLogic's pioneering Relational Infrastructure Management (RIM) architecture. EM7 integrated applications share a common data repository, which greatly simplifies asset management efforts and increases user efficiency. Together these powerful applications help maintain visibility and control of your enterprise while saving time and costs with associated asset lifecycle management. EM7 allows you to track hardware configurations, software installations, purchase orders, locations, software licenses, service contracts, and a wealth of other asset data. EM7 Asset Management gives you flexible and powerful control over your entire enterprise and the lifecycle of each asset.



MANAGEMENT APPLICATIONS

- Network
- Asset & Configuration
- Application
- Event
- Ticketing
- Service Level
- IP & DNS

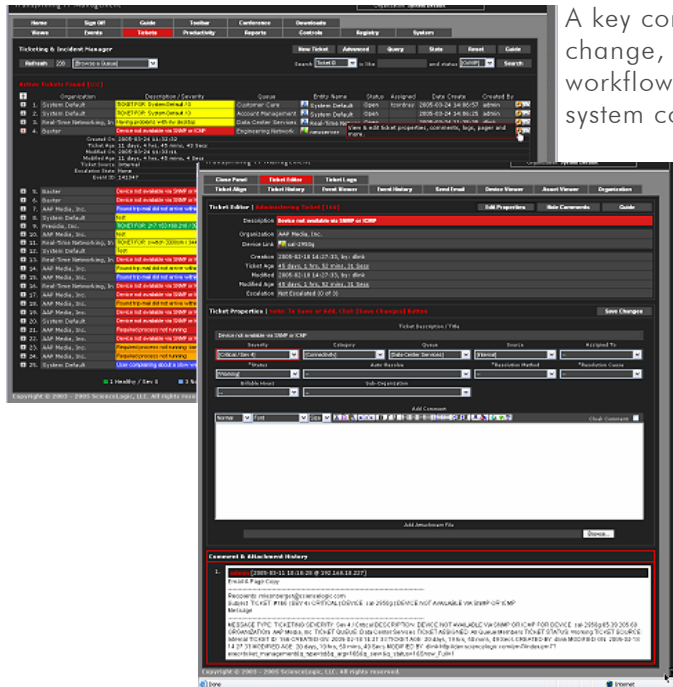
KEY BENEFITS

- Improved asset utilization
- Lower leasing costs and penalties
- Reduce cost of compliance
- Streamline change management
- Enhance quality of service
- Complete lifecycle management
- Ticketing & Help Desk workflow
- Performance management



ASSET MANAGEMENT

Lifecycle Management



A key component to EM7 Asset Management is the ability to track change, enforce policy, and provide task management and workflow for asset lifecycle management. The EM7 Ticketing system completely supports assets records and asset tasks. This means that users can create a ticket for a specific asset and/or its operational functionality as a managed device. In most IT organizations, the quantity of system configuration and software title changes requires an effective and reliable change management strategy.

Operators and management alike can track the history of changes and actions, thus giving you a better understanding of each asset and related capital components. Understanding that business requirements for each enterprise is uniquely different, EM7 gives you control through enhanced features that allow you to tailor EM7 to meet the needs of your business. You can easily establish any number of ticket queues, groups, and escalations which helps enforce internal policies and track user task performance. Complete history logs and adjustable record retention helps your business comply with Sarbanes-Oxley and other legislation initiatives. Granular access control means that only designated users

can access data reporting, ticket management, asset management and dozens of different permission-based embedded components. EM7's unique combination of best practices, flexibility and extensibility, and integration with embedded applications helps you get up and running quickly.

Increase Productivity

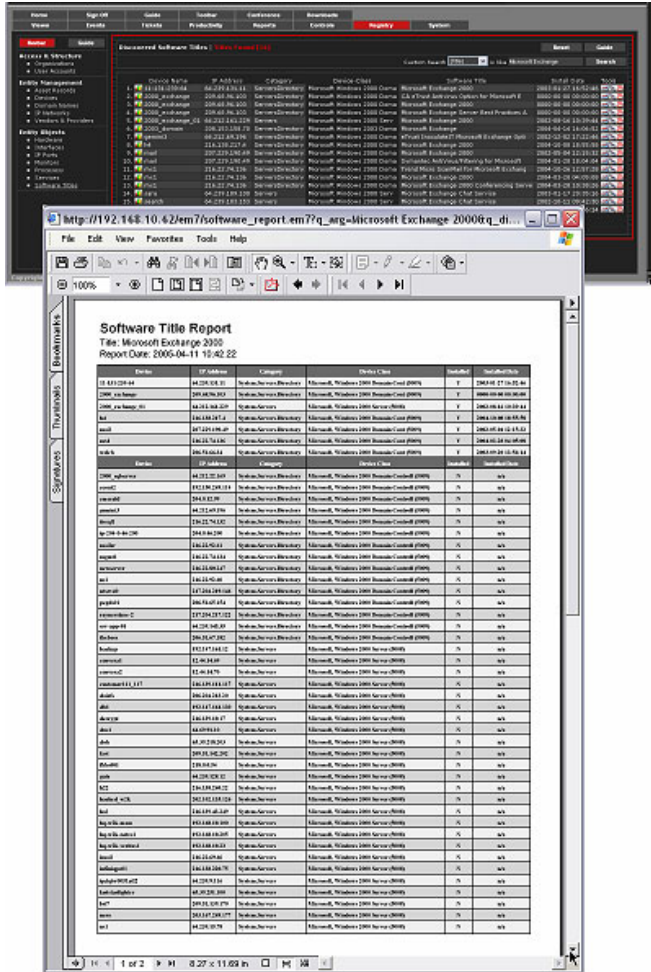
EM7 increases productivity with its intuitive and unified interface, which allows users to quickly access the specific information they need to get their jobs done. Users are never inundated with extraneous information or exposed to other groups' confidential information. EM7's IT asset management improves lifecycle management and production management by giving users real-time links between an asset's operational status (device) and its ownership status (asset).

By integrating asset management with performance management and event management, EM7 allows direct relational linking and parity between how an asset is being utilized, and who is responsible for managing it. This exclusive functionality helps management close the loop between disparate point solution tools, and centralize IT management records into a single authoritative pane of glass.



ASSET MANAGEMENT

Software Utilization



According to Gartner, 40 percent (40%) of all mid-to-large size companies and organizations will be audited by the end of 2006; if organizations are found to be out of compliance fines could escalate into the millions.

EM7 asset management enables managers to provide complete reports about the status and usage of any software title used within your organization. Through auto-discovery and/or operator insertion, software titles, license keys, usages, vendors and organizations can be linked and recorded. When a software license is retired or re-provisioned, EM7 helps you provide evidence and an audit log of changes through EM7's embedded ticketing system.

EM7 uses ScienceLogic's own patent-pending dynamic collection technology, and is designed to scale to meet the needs of your enterprise. When changes are made within your enterprise those changes are automatically replicated to EM7. An example is when a software title is removed from a system, that change will be replicated to EM7. Likewise, EM7's service and process management allows managers to determine if software titles are unnecessarily installed on specific systems. Using EM7's inherent ability to monitor the operational availability of a specific service or process, managers can also remotely disable specific services with the aid of a compliant agent. EM7 Registry and Reporting allows you to easily search for software titles, running services and processes, version numbers, even software patches. Exception

reports can be generated with a single click and advanced filtering allows you to find what your looking for quickly. The result delivers the control and technology necessary to manage your entire infrastructure, while being more compliant with today's business requirements.

Vendor & Organizational Management

EM7 was designed by IT managers who understood the limitations of traditional IT management products. Just as important as the asset itself is the relations that an asset has to other managed entities within your business.

Frequently IT services are provided by an in-house provider, such as IT or MIS. EM7's exclusive features provides management of both in-house and vendor relationships, which results in a clear and concise delineation of asset ownership and the procedures that regulates each asset. EM7's embedded Vendor and Provider Management provide integration of contact, directions, customer numbers and much more. Thus when a warranty is about to expire or you need to arrange for maintenance EM7 can rapidly identify all of the key data points required for your vendor.



ASSET MANAGEMENT

Event & Notification Management

EM7 Management Systems provide a fully integrated event and notification system for all managed assets. Adding powerful features to event management, EM7 automatically displays and manages events in the event a warranty, service provider contract, or domain name registration is about to expire. Using EM7's embedded Ticketing & Incident Management system operators can create tickets and work towards resolving the issue.

Just as important as early warning of expirations, the right people must be notified when problems occur. When specified event conditions are met, EM7 automatically notifies team members, via email, pager, instant messenger, or all three. This allows anyone in your business, including your vendors and/or accounting team to be notified, before issues begin impacting end-users.

EM7's notification policy editor allows business based policies to be easily managed and created. The result is automation that can help you stay compliant and maintain a historical audit log of actions and responses.

Together, the combination of centralization, ease-of-use, automation, and fully customizable features makes EM7 Asset Management an indispensable solution for your business.



ScienceLogic, EM7, EM7 IT Management System, Extensible Management System, E1500, E2500, E4500 and the ScienceLogic and EM7 logos are trademarks of ScienceLogic, LLC in the U.S. and other countries. Other company, product, and service marks may be trademarks or service marks of others.

www.sciencelogic.com

800-SCI-LOGIC

info@sciencelogic.com

