

nGENIUS | INFINISTREAM™

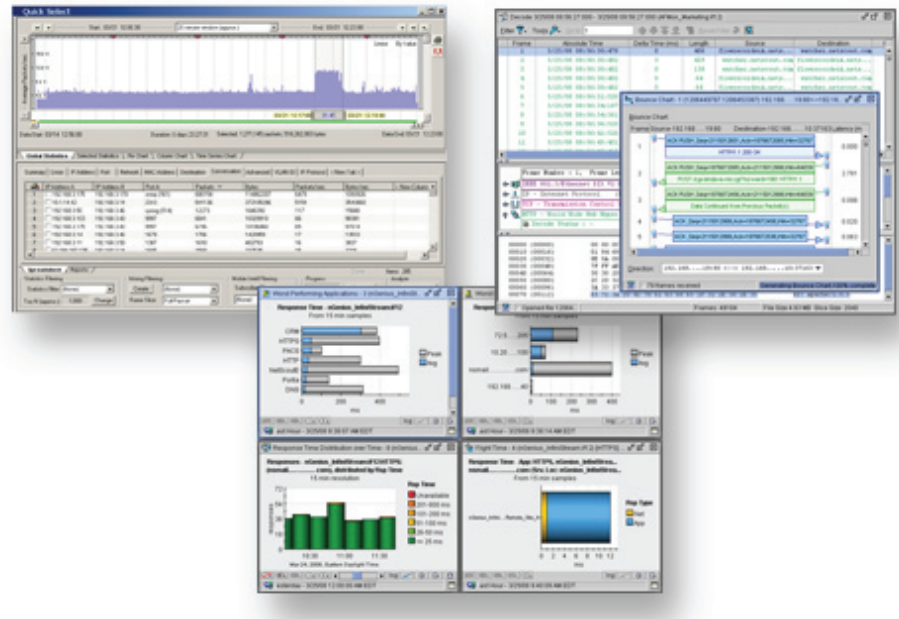


Hardware appliances that provide continuous capture and deep packet inspection functionality to solve today's most difficult network incidents

Highlights

nGenius InfiniStream provides detailed packet recording and deep packet inspection functionality that allows users to:

- Continuously capture packet-level details providing insight to specific network conditions at the time an issue occurred
- Store and index network packets for post event data mining and forensics
- Delivers real-time statistical monitoring and alerting to nGenius Performance Manager for proactive problem detection
- Leverage Sniffer Intelligence Solutions to streamline the troubleshooting of today's toughest network problems
- Rapidly and definitively diagnose the source of performance degradations providing the packet-level visibility that is crucial for incident management
- Gain system-wide visibility of network and application performance and proactive problem recognition to achieve true service-aware network management



nGenius InfiniStream's continuous packet capture functionality provides unparalleled retrospective analysis, which is critical for solving today's most difficult network incidents.

An effective enterprise network enables organizations to become more customer-focused, address new business opportunities, increase profitability and reduce total cost of ownership of performance management. However, there are many difficult network problems that can directly impact the level of service that the network provides to the end user.

Network performance issues, which are commonly intermittent and random incidents, can negatively impact a networks' overall efficiency. Analyzing these events can be time consuming, especially when trying to recreate or pinpoint certain network conditions. Without the original packets for back-in-time network forensic functionality network professionals have no other course of action than to sit and wait for the issue

to reoccur. This approach to network performance assurance commonly equates to an extended mean time to resolution (MTTR), which in turn can impact end users. IT professionals need the ability to continuously capture packet-level details in order to quickly diagnose and resolve today's toughest network problems.

To meet this need, NetScout offers the nGenius InfiniStream that provides 24x7 continuous capture functionality, intuitive data mining and post-event network forensic packet analysis. The nGenius InfiniStream provides a comprehensive packet-level view which facilitates quick problem resolution by easily performing retrospective analysis of the existing network conditions whenever application performance issues occurred.

Product Specifications Fast/Gigabit Ethernet:

For Models: 6910A/TS, 6910A/LS, 6910A/HS, 6910A/VS, 6916A/TS, 6980A/HS, 6980A/VS, 6986A/HS, and 6986A/VS

	Specifications	Additional Information
Rack Unit	2 Server Rack Unit (2U)	
Weight	59lbs. (26.76kg)	
Dimensions	Chassis: 29.79"D x 17.6"W x 3.4"H (75.68cm x 44.7cm x 8.65cm)	Rack mount slide rails included
Capture Ports		
6910A/XX	4 x SFP	Available in /TS /LS, /HS, /VS configurations.
6916A/XX	4 x THG*	Available in /TS configurations.
6980A/XX	8 x SFP	Available in /HS, /VS configurations.
6986A/XX	8 x THG*	Available in /HS, /VS configurations.
Management Port	2 x RJ45	One port for DRAC remote management
Console Port	DB9F	
Embedded Linux OS Support	Separate disk drive dedicated to OS	
Environmental Specifications	Operating Temperature: 50° to 95°F (10° to 35°C) Operating Humidity: 20% - 85% (non-condensing)	
Power Requirements	100-240VAC, 50/60Hz, 750W (9A at 100VAC, 4.5A at 240VAC) 1+1 Hot-swappable, redundant power	
Regulatory and Agency Approvals	FCC Class A, CE Mark (EN 55022 Class A, EN55024, EN61000-3-2, EN61000-3-3), VCCI (Japan) Class A, C-Tick (Australia/New Zealand) Class A, UL 60950 CAN/CSA C22.2 No. 60950, En 60950, CB Report, TUV/G	

* THG = 10/100/1000 Base T Copper

For Models: 6910/LS, 6910/MS, 6910/HS, 6916/MS, 6980/HS, 6986/LS, and 6986/HS

	Specifications	Additional Information
Rack Unit	3 Server Rack Unit (3U)	
Weight	77lbs. (35kg)	
Dimensions	Chassis: 30.5"D x 19"W x 5.25"H (77.4cm x 48.3cm x 13cm)	Rack mount slide rails included
Capture Ports		
6910/XX	4 x SFP	Available in /LS, /MS, /HS configurations
6916/XX	4 x THG*	Available in /MS configurations
6980/XX	8 x SFP	Available in /HS configurations
6986/XX	8 x THG*	Available in /LS, /HS configurations
Management Port	RJ45	
Console Port	DB9F	
Embedded Linux OS Support	Separate disk drive dedicated to OS	
Environmental Specifications	Operating Temperature: 50° to 95°F (10° to 35°C) Operating Humidity: 8% - 85% (non-condensing)	
Power Requirements	100-240VAC, 50/60Hz, 750W (9A at 100VAC, 4.5A at 240VAC) 1+1 Hot-swappable, redundant power	
Regulatory and Agency Approvals	FCC Part 15 Class A, CE Mark (EN 55022 Class A, EN55024, EN61000-3-3), VCCI (Japan) Class A, C-Tick (Australia/New Zealand) Class A, UL 60950-1 CAN/CSA C22.2 No. 60950, En 60950, CB Report, TUV/GS	

Product Specifications 10 Gigabit Ethernet:

For Models: 6990/MS, 6990/HS, 6995/MS, and 6995/HS

	Specifications	Additional Information
Rack Unit	3 Server Rack Unit (3U)	
Weight	77lbs. (35kg)	
Dimensions	Chassis: 30.5"D x 19"W x 5.25"H (77.4cm x 48.3cm x 13cm)	Rack mount slide rails included
Capture Ports		
6990/XX	2 x XFP	Available in /MS, /HS configurations
6995/XX	4 x XFP	Available in /MS, /HS configurations
Management Port	RJ45	
Console Port	DB9F	
Embedded Linux OS Support	Separate disk drive dedicated to OS	
Environmental Specifications	Operating Temperature: 50° to 95°F (10° to 35°C) Operating Humidity: 8% - 85% (non-condensing)	
Power Requirements	100-240VAC, 50/60Hz, 750W (9A at 100VAC, 4.5A at 240VAC) 1+1 Hot-swappable, redundant power	
Regulatory and Agency Approvals	FCC Part 15 Class A, CE Mark (EN 55022 Class A, EN55024, EN61000-3-3), VCCI (Japan) Class A, C-Tick (Australia/New Zealand) Class A, UL 60950-1 CAN/CSA C22.2 No. 60950, En 60950, CB Report, TUV/GS	

For Models: 6990A/HS, 6990A/VS, 6995A/HS, and 6995A/VS

	Specifications	Additional Information
Rack Unit	5 Server Rack Unit (5U)	
Weight	CPU: 110lbs. (49.9kg)	
Dimensions	Chassis (CPU): 26.09"D x 18.85"W x 8.92"H (66.13cm x 47.89cm x 22.66cm)	Rack mount slide rails included
Capture Ports		
6990A/XX	2 x XFP	Available in /HS, /VS configurations
6995A/XX	4 x XFP	Available in /HS, /VS configurations
Management Port	2 x RJ45	One port for DRAC remote management
Console Port	DB9F	
Embedded Linux OS Support	Separate disk drive dedicated to OS	
Environmental Specifications	Operating Temperature: 50° to 95°F (10° to 35°C) Operating Humidity: 20% - 85% (non-condensing)	
Power Requirements	100-240VAC, 50/60Hz, 750W (9A at 100VAC, 4.5A at 240VAC) 1+1 Hot-swappable, redundant power	
Regulatory and Agency Approvals	FCC Class A, CE Mark (EN 55022 Class A, EN55024, EN61000-3-2, EN61000-3-3), VCCI (Japan) Class A, C-Tick (Australia/New Zealand) Class A, UL 60950 CAN/CSA C22.2 No. 60950, En 60950, CB Report, TUV/G	



Storage Configurations:

	Storage	Additional Information
/TS	1.25 TB	
/LS	2.0 – 2.5 TB	
/MS	4.0 TB	
/HS	7.5 - 8.0 TB	7.5 TB ships with one (1) 3U storage unit, see specifications below
/VS	15.0 TB	Ships with two (2) 3U storage units, see specifications below

Product Specifications for 69XXA Storage Units:

Ships with /HS and /VS storage configurations

	Specifications	Additional Information
Rack Unit	3 Server Rack Unit (3U)	
Weight	CPU: 78lbs. (35.4kg)	
Dimensions	Chassis : 17.6"D x 18.9"W x 5.2"H (44.63cm x 48cm x 13.1cm)	Rack mount slide rails included
Power Requirements	100-240VAC, 50/60Hz, 550W (7.2A at 100VAC, 3.6A at 240VAC) 1 + 1 Hot-swappable, redundant power	
Regulatory and Agency Approvals	FCC Class A, CE Mark (EN 55022 Class A, EN55024, EN61000-3-2, EN61000-3-3), VCCI (Japan) Class A, C-Tick (Australia/New Zealand) Class A, UL 60950 CAN/CSA C22.2 No. 60950, En 60950, CB Report, TUV/G	

About NetScout Systems

NetScout Systems provides advanced network and application service assurance solutions that deliver complete visibility into real-time, packet/flow-based operational intelligence. IT operators at the world's largest enterprises, government agencies, and service providers use the Sniffer and nGenius solutions to troubleshoot service degradations faster and more efficiently in order to reduce MTTR.

Our world-renowned Sniffer and nGenius solutions include:

- Intelligent Data Sources for high capacity, deep-packet recording and monitoring
- Analysis Software for real-time and historical network and application performance management, troubleshooting, capacity planning, and reporting
- Advanced Intelligence for early detection and in-depth analysis of complex or specialized application services
- Comprehensive, global support, consulting and training services

Corporate Headquarters

310 Littleton Road
Westford, MA 01886-4105
Phone: 978-614-4000
Toll Free: 888-999-5946
www.netscout.com

European Headquarters

NetScout Systems (UK) Ltd.
100 Pall Mall
London SW1Y 5HP
United Kingdom
Phone: +44 (0)20 7321 5660

Asia/Pacific Headquarters

Room 105, 17F/B, No. 167
TunHwa N. Road
Taipei, Taiwan
Phone: +886 2 2717 1999
www.netscout.cn

©2008 NetScout Systems, Inc. All rights reserved. NetScout, the NetScout logo, Network General, the Network General logo, nGenius, Sniffer, InfiniStream, Business Container, Business Forensics, NetVigil and Quantiva are trademarks or registered trademarks of NetScout Systems, Inc. Other brands, product names and trademarks are property of their respective owners. NetScout reserves the right, at its sole discretion, to make changes at any time in its technical information and specifications, and service and support programs.