

New! 10 GbE Support!

Data Sheet

HIGHLIGHTS

- Portable, all-in-one, data recording and analysis solution with integrated 17" LCD display
- Complete visibility into your network in real time and over an extended period of time
- Continuous collection of network statistics with reporting capabilities
- Unique and powerful Atlas "drill-down" analysis facility provides access across all seven OSI network layers
- Includes 1 free year of software updates so you can benefit from all the fixes and enhancements that ClearSight provides to its customers on a regular basis

BENEFITS

- Accurately time stamp 4 GbE links to 20ns or 2 10 GbE links to 10ns resolution in hardware
- Capture, store, index, categorize, archive and recall up to 1.6 TBs of network data. Perform packet analysis and decode on the fly
- FPGA/hardware implemented filter and trigger capabilities at full line rate speeds
- Show network statistics and information with trending graphs. Easily identify throughput problems and anomalies
- Save valuable buffer capture space by capturing only important protocol information
- Show packet decodes and perform packet analysis for nearly 1,000 protocols including those in the TCP/IP, UDP/IP, RTP and HTTP families. Understand protocol interactions completely
- Reconstruct and replay both video and voice data in real time and under post-capture scenarios

Introduction

The ClearSight Network Time Machine® (NTM) Portable is an all-in-one data recording and analysis solution that is capable of monitoring and capturing data on four channels of a 10/100/Gigabit (10 GbE support is also available) network and storing the captured data on internal RAID sub-storage system. Data is extracted

and analyzed through the use of history graphs and reports generated by ClearSight Networks Analyzer software which has been integrated with the NTM Portable.



Easy Data Extraction

Data for analysis can be extracted simply by using the mouse to specify a time range. It is from within this context that the administrator can launch into their analysis and troubleshooting work. Extracted data can be analyzed using the ClearSight Analyzer (CSA). During real-time monitoring, reports can be created and viewed.

Expert Alert Function

The CSA's Expert Alert function automatically detects communication faults in captured packets and displays alerts using five-step color coded icons.

Alerts detected by CSA, either in real-time or from a trace file, are classified as events (faults in the communication sequence) or problems (faults that exceed a threshold value) and can be listed separately. You can drill down to the associated communication flow by right-clicking on an alert during post capture analysis.

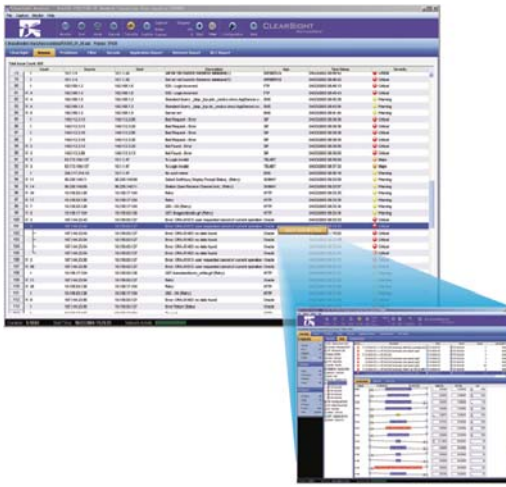


NTM Atlas

A key feature of Atlas and the NTM platform is the ability to capture, index, and classify complex network information.

This data is then used to create unique views that are critically valuable to assisting network engineers and administrators to proactively manage and service their networks. These views are shown in the Atlas workspace, and are easily accessible by a few mouse clicks.

Atlas is currently designed to support four main upper layer application types: HTTP, H.323, SIP, and RTP. Future revisions of the software will support additional applications and functionality.

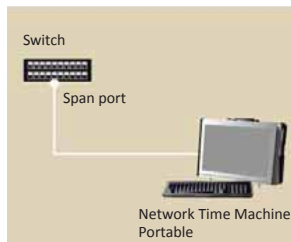


FEATURES

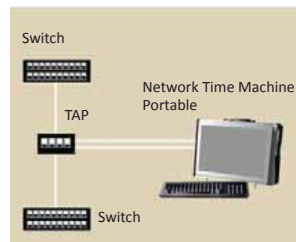
Product Name	Network Time Machine Portable2
Model Number	10/100/1000 Mb/s version: CSR-4530-H 10 Gb/s version: CSR-4530-H-10G
Capture Performance	Sustained capture rate is typically around 3 Gb/s
Capture Filter	Yes
Save Filter	Yes
Display Filter	Yes
Payload Slicing	Yes
Realtime Alert	Yes
Realtime Statistics (RMON1)	Yes
Realtime Flow Analysis	Yes
Post Analysis	Yes
Realtime Report	Yes
History Report	Yes
Trace File Report	Yes
Atlas Option Support	Yes
Storage Capacity	1.6 TBs
Storage Array Support	No
Redundant Power Supply	No
RAID Level	RAID 0

CONNECTING A NTM TO A NETWORK

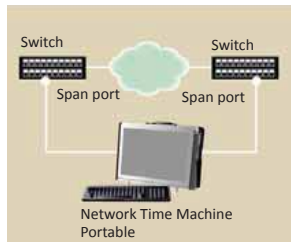
End Station



Pass Through Using Tap



Multiple Segments



HARDWARE SPECIFICATIONS

CPU	Two Quad Core Xeon 5335 Processor 2x6 MB Cache, 2.0 GHz, 1066 MHz FSB
OS	Microsoft Windows 2003 Server
Memory	4 GBs Direct Connect DMA Striping Channels Memory
Drives	Storage Capacity: 1.6 TBs OS: 1x200 GB SATA Packet Store: 8x200 GB SATA
Monitor/Capture Ports	Model CSR-4530-H: 4 GbE Ports (Copper & Optical) Model CSR-4530-H-10G: 2 10 GbE Ports (XFP -- supports CX4 copper & Optical)
Power Supply	400/520 W u-to-switching 110/220V AC
Physical Dimensions	5.69in (D) x 16.8in (W) x 11.44in (H) 14.5cm (D) x 42.7cm (W) x 29cm (H)
Weight	13.5 - 19.5 lbs (depending on configuration) (6.1 - 8.9 kgs)
Temperature	Operating: 5° to 55°C (41°F to 131°F) Non-operating: -40° to 65°C (-40°F to 149°F)
<ol style="list-style-type: none"> 1 year warranty parts and labor included; additional years can be purchased CSR-4530-H and CSR-4530-H-10G include a soft carry case 	



46401 Landing Parkway
Fremont, CA 94538-6496

For more information, call or email us:
Telephone (US Toll Free): 1-800-825-7563
Telephone (International): +1-510-824-6000
Fax: 1-510-824-6100
Email: sales@clearsightnet.com

www.clearsightnet.com

©2008 ClearSight Networks. All rights reserved. Network Time Machine is a registered trademark of ClearSight Networks. All other company and product names may be trademarks or registered trademarks of their respective companies. Features and specifications are subject to change without notice.

10/08