



FlowMagic - 3200

**FlowMagic Series High Speed
Network Traffic Visibility and Analytic Appliance**

Applications

- Network Data Recording and Analytic Infrastructure ■
- Traffic Analysis and Meta Data Extraction ■
- Network Health Monitoring and Characterization ■
- Traffic Capture, Analysis and Replay ■
- Security Compliance Assurance ■
- Monitor and Ensure Network Quality Of Service ■

Unified Traffic Visibility Architecture

- Up to 32 1G/10G SFP+ Capture Ports
- Lossless Line Rate Capture with Filters
- Gain Instant View Over Packets with Display Filter Support
- Traffic Archiving, Metadata Extraction, Post Processing and Analytics

Scale-Out and Scale-Up Storage Architecture

Integrated Filter Support, Application Classification and Analytics Engine

Complete Visibility Stack

Integrated Packet Decoder with Filter Support; Direct Wire-to-View from WEB UI

- **Capture**
- **Analyze**
- **Discover**
- **Manage**



FLOWMAGIC-3200

Empower Your Management over Network Data

Advanced High Performance, Integrated Wire to View, Wire to Storage Network Visibility and Analytical Appliance, Answering Who, When, What, Where and How At Your Finger Tips. Built for Scalability and Reliability.

FlowMagic-3200

Unified Network Visibility



Next Generation Device For Total Network Visibility

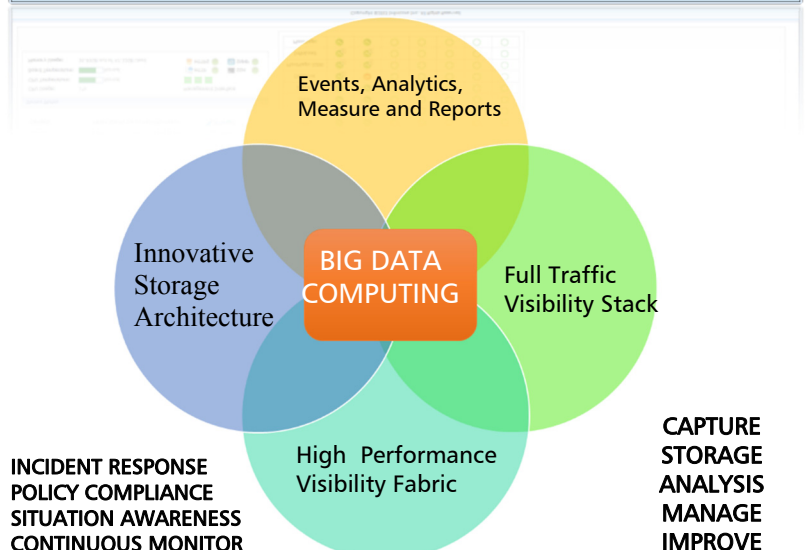
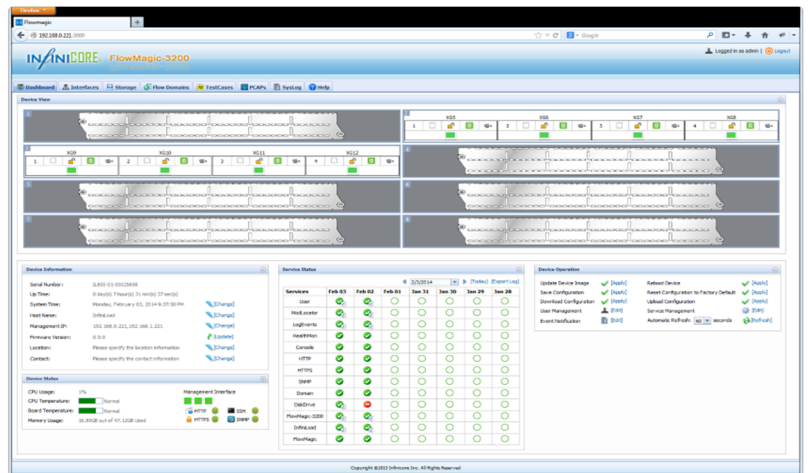
InfiniCORE™ FlowMagic-3200 is purposefully designed to solve high speed visibility and analytical issues that today's network administrators and engineers are facing during their daily tasks. Powered by its unified visibility architecture, FlowMagic-3200 is an ideal platform for wire speed network traffic capturing, archiving, analyzing and diagnosis tasks. It is a remarkably easy to use tool with rich analytical features while can linearly scale its storage capability and capturing capabilities.

Streamlined, Outstanding Software Package

InfiniCORE™ FlowMagic-3200 is powered by InfiniIOS with comprehensive functionalities available directly in Web Based GUI for management, visibility and analytics. InfiniIOS has comprehensive role-based right management to support authorized and differentiated visibility into the data.

Discover The Power of Big Liquid Data

When data is readily available and properly presented, issues can be discovered faster and resolved quickly. FlowMagic-3200 is the first appliance in its class that enables customers to archive, analyze and comprehend the data in complex network environment quickly and efficiently. The rich analytical features built into the appliance provides a whole new way to help customers to solve network glitches and to ensure the quality of service.



- Essential Tool in Network Monitoring and Forensic Infrastructure
- Zero Packet Loss for Line Rate Minimum Size Packet
- Flexible Traffic Capture Modes, Operate at Gigabit or Ten Gigabit Mode
- Wide Range of Media support, 10G, 10G-DAC, 1G-SGMII
- Integrated Packet Decoder; Gain Instant View Over Packets with Rich Display Filter Support
- Rich Built-in Analytic Tools that Provides End Points, Conversation and Content Information
- Downstream Tool Integration with Data Export in PCAP format
- Integrated Network Quality of Service Sensors and Reputation Score Calculation
- Pioneered Role Based Visibility Management Support Fully Authorized Visibility
- Programmable API to Automate Operation Tasks and Analysis
- Cost Effective, Low Power Design, Low TCO, Green and Environmental Friendly

Contact us

Infinicore Inc.
<http://www.infinicoreinc.com>

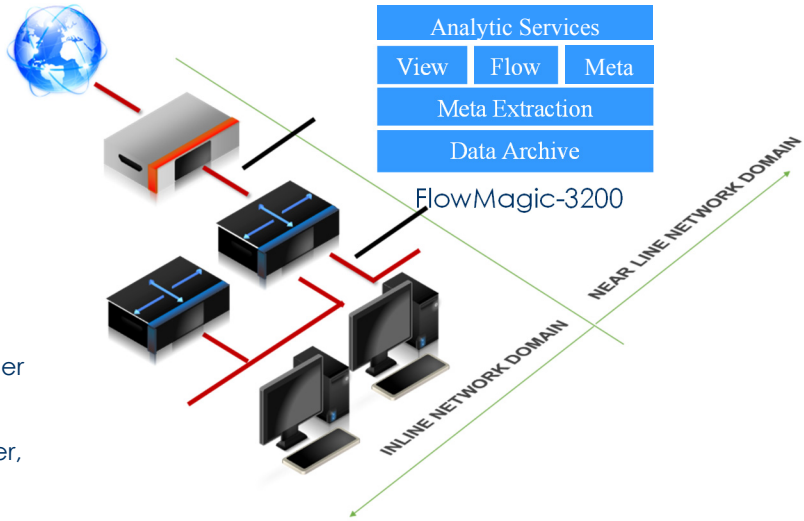
Sales:
sales@infinicoreinc.com
 Support:
support@infinicoreinc.com

Highlights of FlowMagic-3200 Use Cases



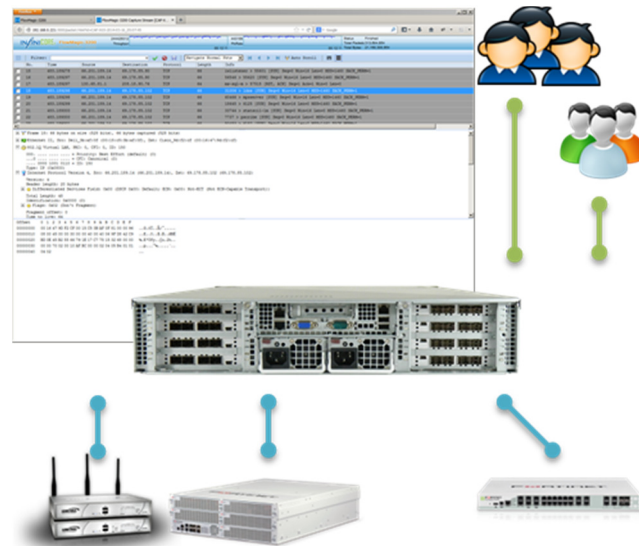
For Government, Financial and Enterprise Network Monitoring and Forensic Infrastructure

- Essential Tool in Near Line Network Domain
- Single Or Multiple TAP Points Deployment
- Line Rate Packet Capture Performance
- Help Network Meet Regulatory Compliance Such as SOX, PCI and HIPPA
- Direct Wire-to-View Packet Decoder and Analyzer, Diagnosis Made Easier
- Plug-and-Play; Support Light Splitter, SPAN or Inline Mode

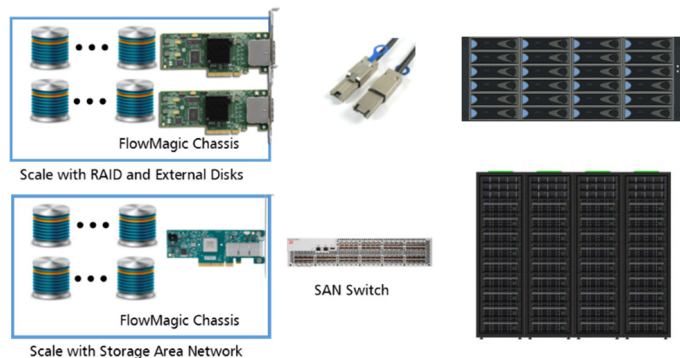


Unified Visibility, Whenever You Need It and Wherever You Need It In Your Network

- Cost Effective Oscilloscope for Network Administrators and Engineers
- Support Sharing Across Multi-User and Work Group with Reservation Management
- Plug and Play. Inline Visibility
- Lossless high performance Data Capture and Analysis
- Easy to Use WebUI Similar to Wireshark for Packet Viewing and Analysis



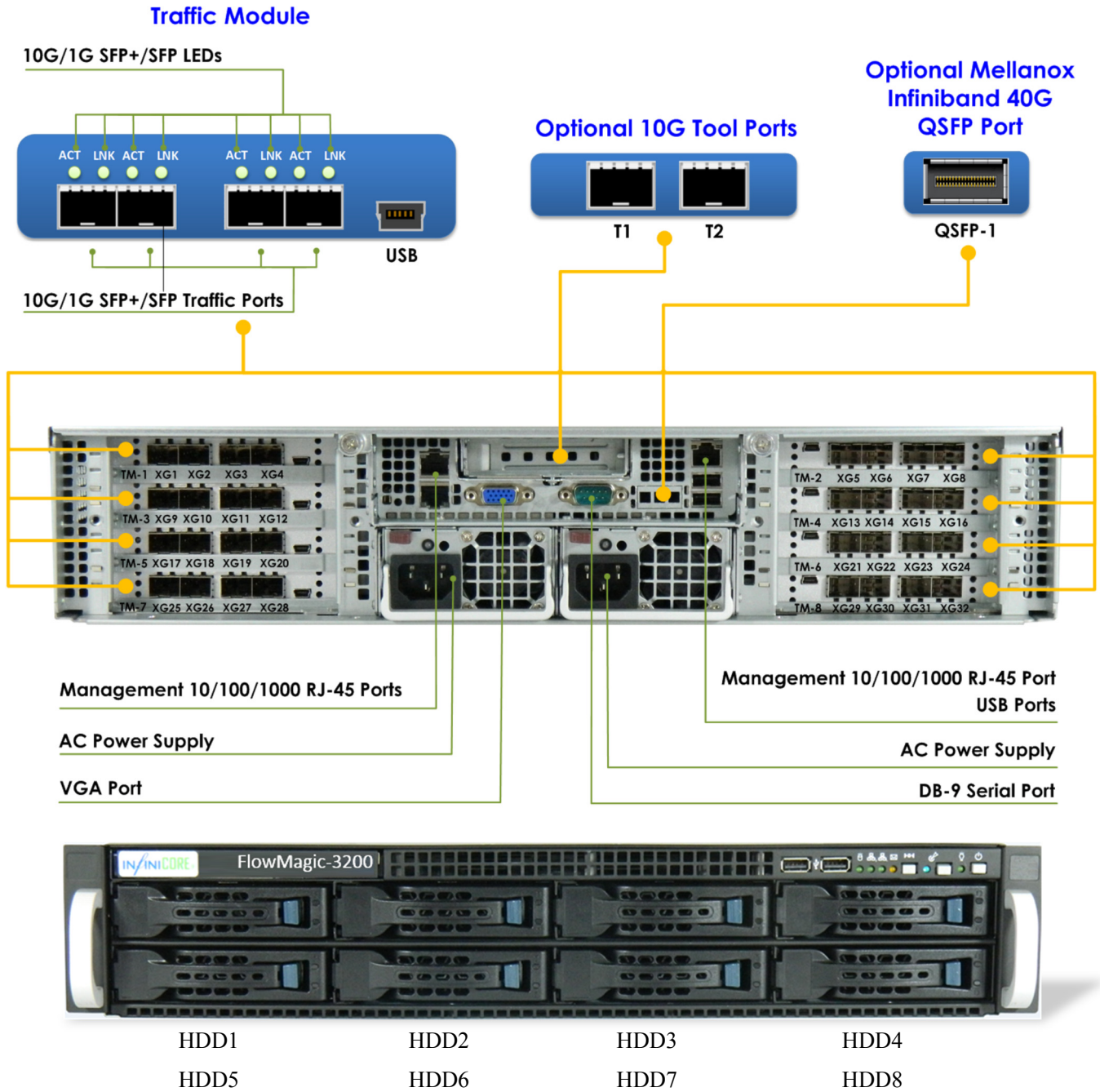
Scale-Out and Scale-Up Traffic Archival Storage Architecture



- Purposefully Designed Scale Up and Scale Out Storage Architecture
- Advanced Storage Management and Health Monitoring
- Comprehensive Load Balancing Scheme Among Storage Devices
- Effective Traffic Data Reduction to Maximize Storage Efficiency

One Stop Total Visibility Into Your Networks

- **Data centers** and **enterprises** that seek traffic visibility into their networks
- **Governments** and **agencies** for network monitoring, forensic collection
- **Service providers** delivering services and applications over IP networks
- **Operators** maintaining networks and standard compliance
- **Third parties** and **labs** performing devices validation and certification



Order Codes



Contact InfiniCORE Sales sales@infinicoreinc.com
 For more information, visit <http://www.infinicoreinc.com>