

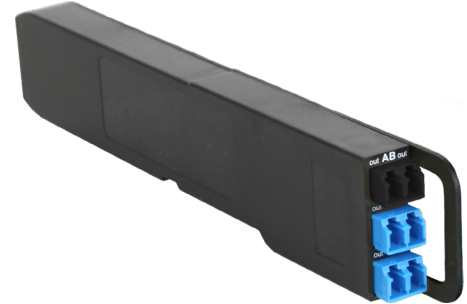
DIODETAP

LC TAP MODULE WITH TOTAL PROTECTION

The DiodeTAP Module provides a TAP point with an innovative security feature. It prevents any potential attacks or disruptions by blocking light coming from the monitor ports.

The DiodeTAP ensures total security and availability for monitored networks, while providing 100% visibility.

The DiodeTAP Module is part of the MOD-TAP series, and uses the Modular Chassis for rack mounting, providing up to 24 single-mode modules or 6 multi-mode modules in 1U.



DiodeTAP Module Single-Mode

MAXIMUM INSERTION LOSS (DB)

SPLIT RATIO*	50 / 50	60 / 40
Single-Mode 9/125 μm	Network: 3.6 / TAP: 4.4	Network: 2.7 / TAP: 5.5
Multi-Mode 50/125 μm	Network: 3.8 / TAP: 5.0	Network: 2.8 / TAP: 6.0

Note: These values don't include external connector loss.

*Other split ratios available on demand

PRODUCT DIMENSIONS

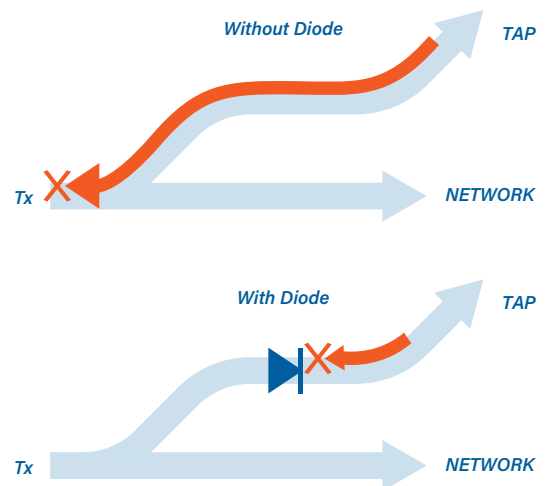
	DIMENSIONS (WxDxH)	WEIGHT
Modular Chassis	440 x 202 x 44 mm 17.3 x 8 x 1.7 in	2140 g 4.72 lb
DiodeTAP Module SM 9/125 μm	17 x 217 x 41 mm 0.7 x 8.5 x 1.6 in	76 g 0.17 lb
DiodeTAP Module MM 50/125 μm	68 x 217 x 41 mm 2.7 x 8.5 x 1.6 in	550 g 1.21 lb

PRODUCT SPECIFICATIONS

CHASSIS			ORDER REFERENCE
1U Modular Chassis (up to 24 modules)			AMC-1U
MODULE	WAVELENGTH	SPLIT RATIO	ORDER REFERENCE
LC DiodeTAP SM 9/125 μm 1-100 Gbps	1310nm	50/50	F1D-MOD-13-50
		60/40	F1D-MOD-13-60
	1550nm	50/50	F1D-MOD-15-50
		60/40	F1D-MOD-15-60
LC DiodeTAP MM 50/125 μm 1-25 Gbps	850nm	50/50	F1D-MOD-85-50
		60/40	F1D-MOD-85-60

FEATURES

- Diode function protects network against light insertion from TAP ports: high insertion loss on TAP port input blocks all signal (>35 dB on SM model, >25 dB on MM model)
- Non-intrusive in-line monitoring
- Permanent network link guaranteed
- Monitoring of all OSI layers
- No packet loss, no point of failure
- Passive, unpowered
- Various split ratios available



Modular Chassis with Single-Mode DiodeTAP Modules